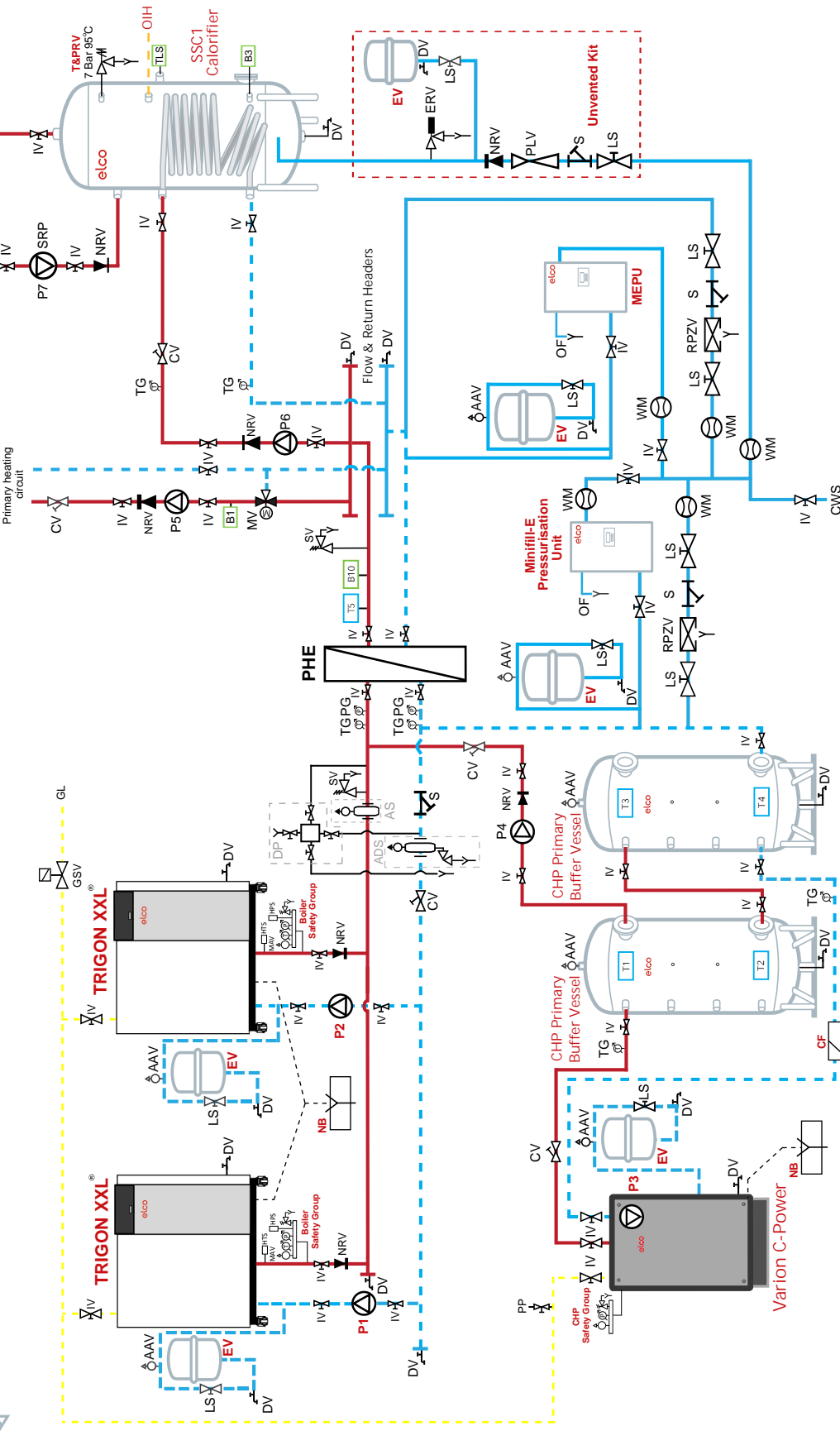


Please Note:

High system return temperatures lead to forced shutdowns of the CHP.  
Return temperatures less than 65°C must be achieved.



**Legend**

- AAV - Automatic Air Vent
- ADS - Air/Dirt Separator
- AS - Air Separator
- B1 - Heating Circuit 1 Temperature Sensor
- B3 - Calorifier Temperature Stat
- B10 - Boiler Common Flow Temperature Sensor
- CF - Combination Filter
- CV - Commissioning Valve
- CWS - Cold Water Supply
- DHW - Domestic Hot Water
- DP - Dosing Pot
- DV - Drain Valve
- ERV - Expansion Relief Valve
- EV - Expansion Vessel
- GL - Gas Line
- GSV - Gas Shut-off Valve
- HPS - High Pressure Switch
- HTS - High Temperature Switch
- IV - Isolation Valve
- LS - Lockshield Valve
- MAV - Manual Air Vent
- MEPU - Minifi-E Pressurisation Unit
- MV - Mixing Valve (Motorized)
- NB - Neutralisation Box \*
- NRV - Non-Return Valve
- OF - Overflow Pipe
- OIE - Optional Immersion Element
- PG - Pressure Gauge
- PHE - Plate Heat Exchanger \*\*
- PLV - Pressure Limiting Valve
- PP - Purge Point
- RPZV - Reduced Pressure Zone Valve \*\*\*
- S - Strainer
- SRP - Secondary Recirculation Pump
- SV - Safety Valve \*\*\*\*
- T&PRV - Temperature & Pressure Relief Valve
- T1-T5 - CHP Temperature Sensors
- TG - Temperature Gauge
- WM - Water Meter

\* Check with local authority if this is required

\*\* Size dependent on the ΔT and kW output of the boilers

\*\*\*\* Above 70kW input is mandatory

\*\*\*\*\* Must comply with BS6644 (Page 13)

Please Note:  
This illustration is designed to provide general guidance on the hydraulic scheme and should not be considered as a design drawing. Control of individual components is flexible and for this reason details are included on this illustration. Where further guidance is required, please contact Elco Heating Solutions.

- Boiler Safety Group Contents\***
- Manual Air Vent
  - Temperature Gauge
  - Pressure Gauge
  - High Temperature Switch
  - High Pressure Switch
- \* Kit components offered by Elco Heating Solutions that complies with BS6644
- CHP Safety Group Contents\***
- Automatic Air Vent
  - Pressure Gauge
  - Safety Valve
- \* Supplied with CHP

**Pumps**

- P1 - Boiler Circulating Pump**
- P2 - Boiler Circulating Pump**
- P3 - CHP Circulating Pump**
- P4 - Primary Buffer Circulating Pump
- P5 - Primary Heating Circuit Pump
- P6 - DHW Circuit Circulating Pump
- P7 - DHW Recirculation Pump

All of the items in Red Bold can be supplied by Elco Heating Solutions

**Elco Heating Solutions - January 2021 Schematic**

- 2 Trigon XXL high efficient, pre-mix condensing boilers and 1 Varion CHP unit with 2 Buffer Vessels providing primary water via a Plate Heat Exchanger providing separation for 1 mixed temperature primary heating circuit and 1 domestic hot water circuit via SSC1 Calorifier with optional unvented kit and DHW Recirculation.

**Elco Heating Solutions**

3 Juniper West, Fenton Way  
Southfields Business Park  
Basilston, Essex  
SS15 6SJ  
Tel: 0345 646 0442

Page 1 of 1

Drawing Number - 01/2021



www.elco.co.uk